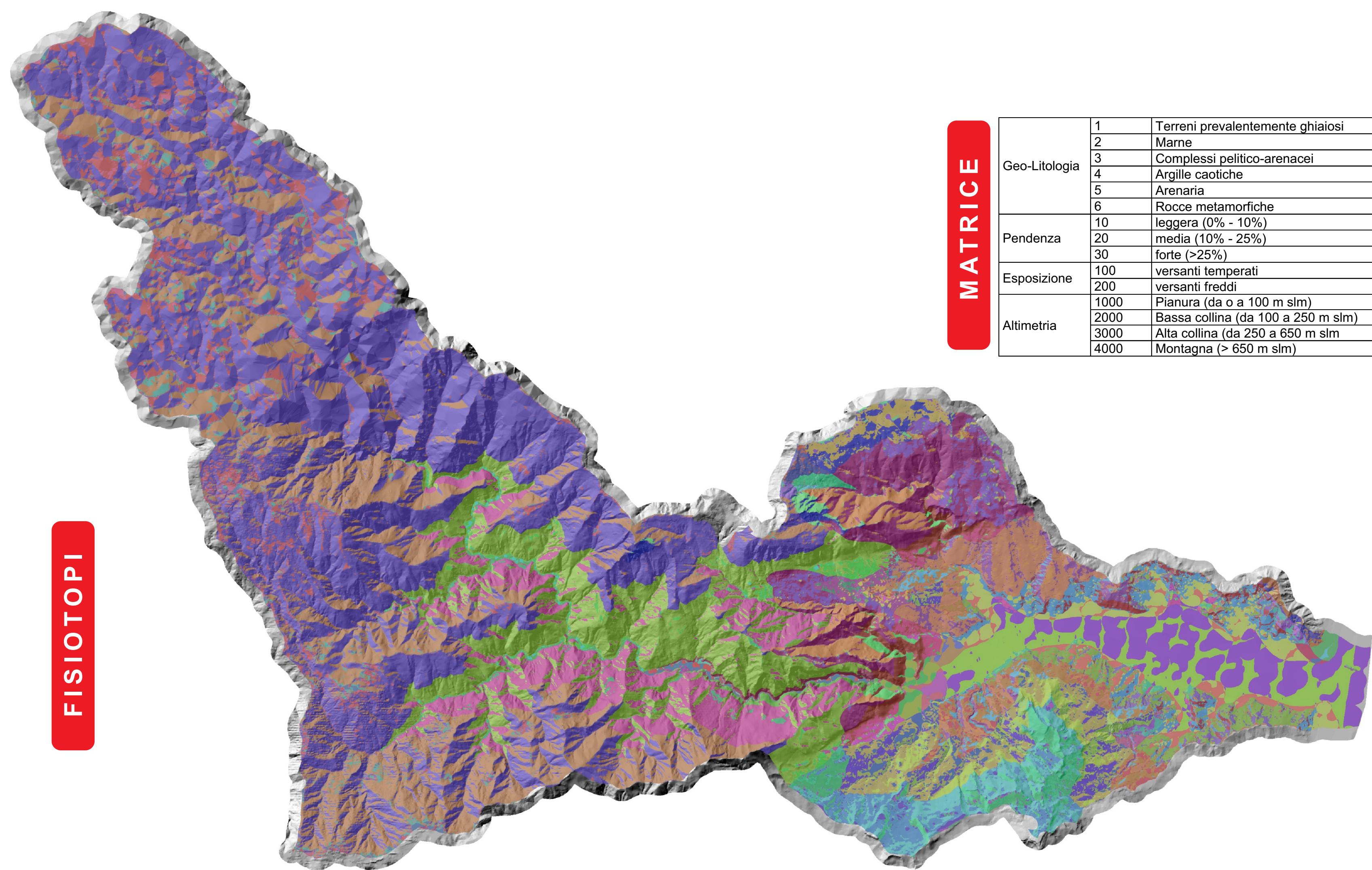


# fisiotopi

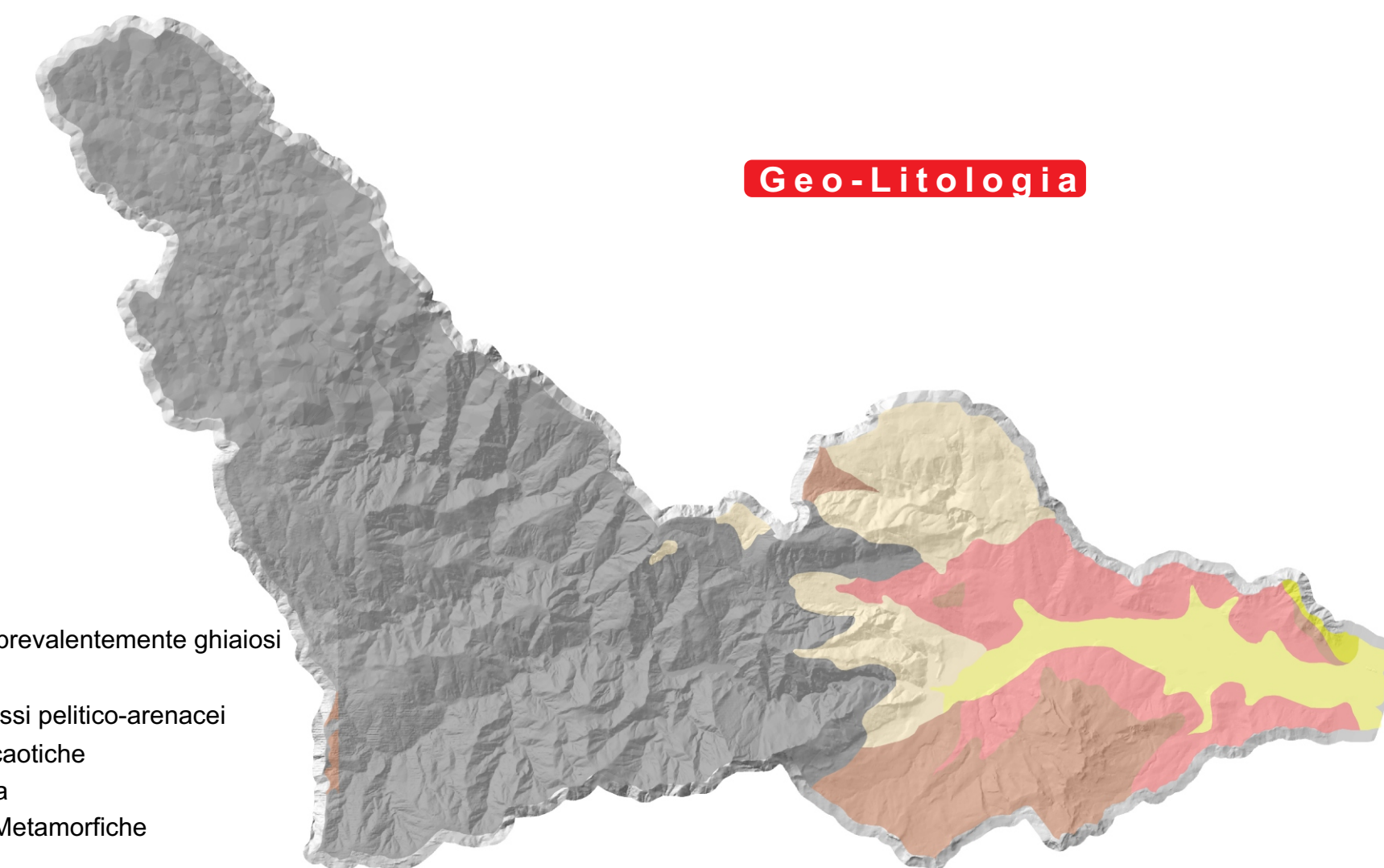
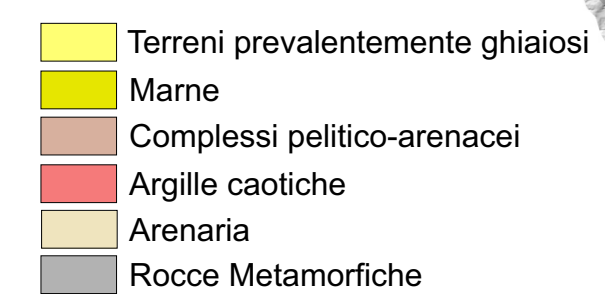
# matrice



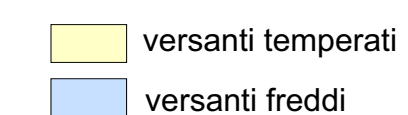
## FISIOTOPI

|                |               |      |                                    |
|----------------|---------------|------|------------------------------------|
| <b>MATRICE</b> | Geo-Litologia | 1    | Terreni prevalentemente ghiaiosi   |
|                |               | 2    | Marne                              |
|                |               | 3    | Complessi pelitico-arenacei        |
|                |               | 4    | Argille caotiche                   |
|                |               | 5    | Arenaria                           |
|                |               | 6    | Rocce metamorfiche                 |
| Pendenza       |               | 10   | leggera (0% - 10%)                 |
|                |               | 20   | media (10% - 25%)                  |
|                |               | 30   | forte (>25%)                       |
| Esposizione    |               | 100  | versanti temperati                 |
|                |               | 200  | versanti freddi                    |
| Altimetria     |               | 1000 | Pianura (da 0 a 100 m slm)         |
|                |               | 2000 | Bassa collina (da 100 a 250 m slm) |
|                |               | 3000 | Alta collina (da 250 a 650 m slm)  |
|                |               | 4000 | Montagna (> 650 m slm)             |

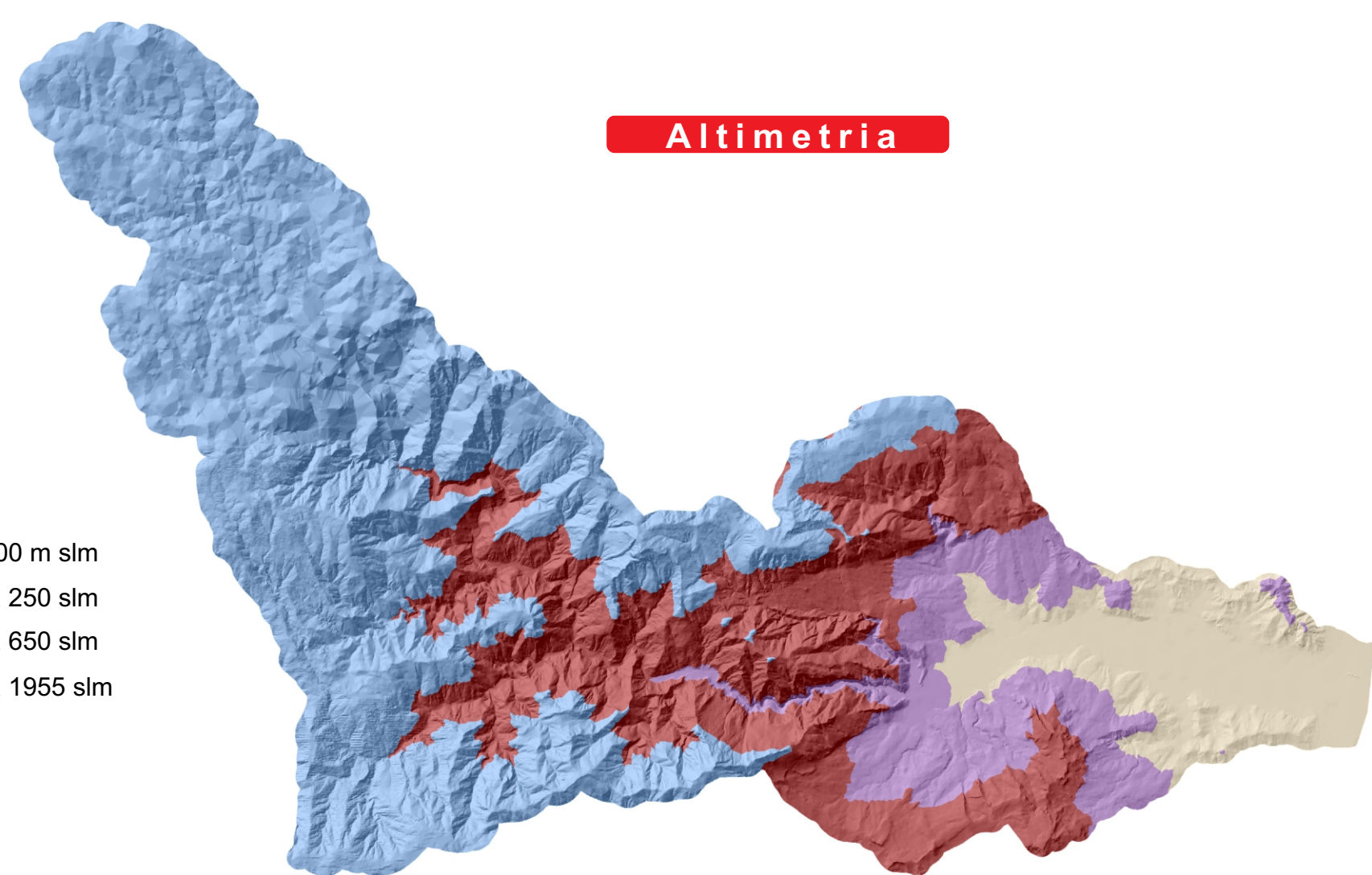
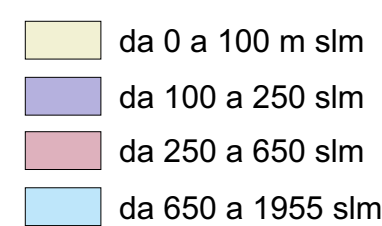
## Geo-Litologia



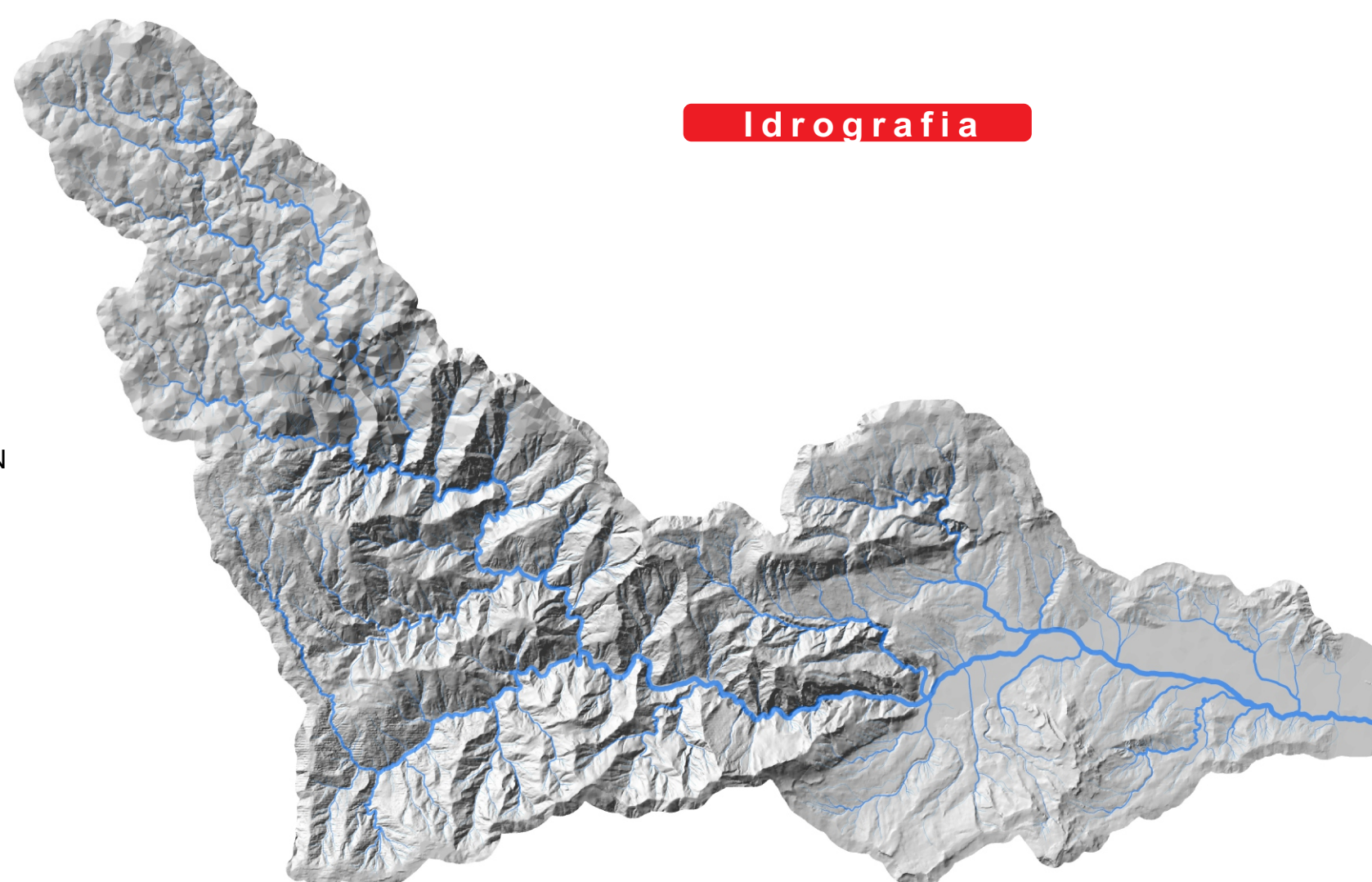
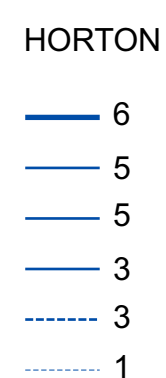
## Esposizione



## Altimetria



## Idrografia



## Pendenza

